

THE

Press Kit

**Exhibitions
Conferences
Workshops
Publications
Tours**

F

RM

OF

**5 Oct—
11 Dec**

F

RM

Press Kit

Main Exhibitions

The Form of Form	6
Building Site	7
The World in Our Eyes	8
Sines: Seaside Logistics	9

Conferences

Talk Talk Talk	10
----------------	----

Satellites

Ruins of the Apocalypse	12
Letters to the Mayor	12
A Triangular History	13
Object - Project	13
The Power of Experiment	14
2016 - Ennials	14
The Limits of Landscape	15

Associated Projects

Continual Collective Construction	16
Other Lisbon	16
Cartha	16
The World of Charles and Ray Eames	16
Plataforma Trafaria	17
Labor	17
The Club	17
The Shape of Plain	17
Matière Sensible	18
The Thickness of the Limit	18
White Lime Alprenga	18
Amadora International Comics Festival	18

Awards

Lifetime Achievement	19
Début	19

Book

Publication	20
-------------	----

Participant

Biographies	21
-------------	----

4th Edition

Lisbon Architecture Triennale

5 oct — 11 dec 2016

The Lisbon Architecture Triennale is a non-profit association whose mission is to examine, foster and promote architectural thinking and practice. It holds a major forum every three years for the debate, discussion and dissemination of architecture across geographic and disciplinary boundaries. In addition to this main periodic appointment, the Triennale organizes conferences and events all year round, such as Open House Lisboa, an event that for one weekend each year opens the doors to the best architecture in the cities.

The first Triennale, Urban Voids, took place in 2007 presenting a programme of international exhibitions, competitions and conferences. In 2010 the second edition, Let's Talk About Houses, consolidated the Triennale's presence on the circuit of events devoted to architecture. With its third edition, Close, Closer, in 2013, the event reaffirmed its international reach and recognition.

In 2010, an invitation was made to architects André Tavares and Diogo Seixas Lopes to share the chief curatorship of this edition, something with no precedent in the Lisbon Triennale's history. From Porto and Lisbon, respectively, this curator duo presents a solid career grounded in the multiplicity of practices, both in built work as in the production of architectural theory and criticism. In February of this year, Diogo Seixas Lopes passed away, the preparation work for the Triennale was already well consolidated. The best homage the Triennale can do to him is to accomplish the work he conceived and, in that sense, conclude the project as it was designed.

André Tavares and Diogo Seixas Lopes

Chief curators

The world is transformed through architecture. Under the title The Form of Form, this fourth edition of the Lisbon Triennale sets out to further the debate around a wide spectrum of contemporary approaches to architectural practice today; in other words, to debate the ways in which the world is transformed.

With its diverse yet cohesive programme, the Triennale will seek to highlight currents of thought considered important for the production of architecture in a social context that is in constant transformation.

The different perspectives on architecture will be presented through their aesthetic, technical, social and political aspects. Understanding architecture as a profession that is committed to a complex social context will make it possible to further advance the implications and possibilities of architectural decisions, enhancing their technical and cultural importance in society.

67 Days

4 Main Exhibitions

1 Book

4 Publications

7 Satellites

3 Awards

1 Competition

12 Associated Projects

3 International Conferences

PROGRAMME HIGHLIGHTS

OPENING WEEK
5—9 OCT

**TALK, TALK,
TALK**
17, 18, 19 NOV

CLOSING WEEK
7—11 DEC

During its 67 days, the programme of Triennale will feature a very rich array of exhibitions, conferences, guided tours, workshops, book presentations and much more. The four main exhibitions are: The Form of Form, Building Site, The World in Our Eyes and Sines: Seaside Logistics. They will be hosted at prime venues in Lisbon: the Calouste Gulbenkian Foundation, the brand new MAAT Museum, Triennale's headquarters as well as Garagem Sul: Centro Cultural de Belém. These shows are complemented by seven Satellites unfolding around Lisbon, its outskirts and beyond, expanding the geographical and thematic reach of the event. An extended programme of Associated Projects will further widen the discussion.

Three major highlights in the program are the Opening Week, the Talk,Talk,Talk conference series as well as the Closing Week finissage.

A four-day long event, the Opening Week taking place from 5 October to 9 October will bring together the general public as well as participants, curators and press.

Another highlight will be the Talk, Talk, Talk, a three-day series of conferences taking place from 17 to 19 November, 2016. The event will feature talks by prominent architects and researchers debating the issues raised by Triennale's program of events. The same week. The same week, on 15 November, Triennale will host the lecture by the winner of its Lifetime Achievement Award as well.

Last but not least, the Closing Week from 7 to 11 December 2016 will be an additional highlight in this edition of Triennale and it will feature a lecture by Triennale Millennium bcp Début Award winner.

Stay tuned: the full programme for these days is still to be disclosed.

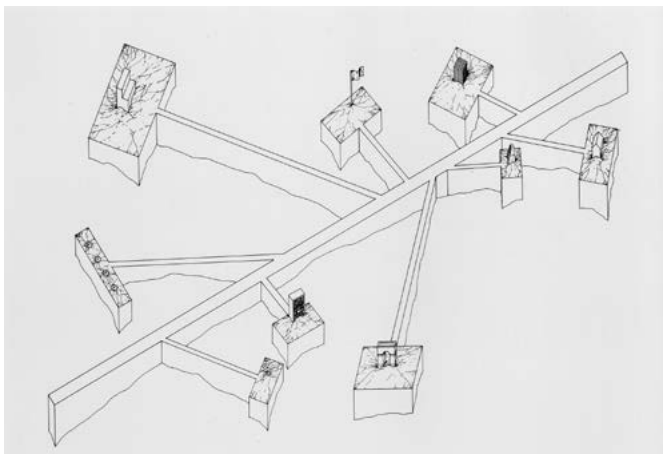
MAIN EXHIBITIONS

MAAT—Museum of Art,
Architecture and Technology

THE FORM OF FORM

Opening 5 Oct., 2pm

6 Oct.—12 Dec.



Calouste Gulbenkian Foundation

BUILDING SITE

Opening 6 Oct., 7pm

7 Oct.—11 Dec.



Garagem Sul—Centro Cultural de Belém

THE WORLD IN OUR EYES

Opening 7 Oct., 7pm

8 Oct.—15 Jan.

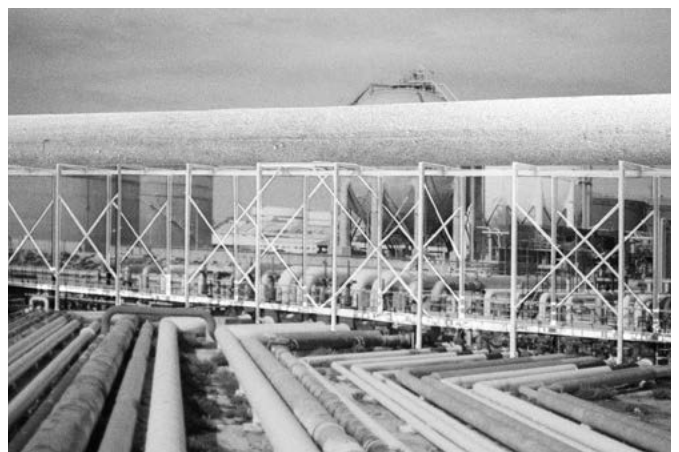


Triennale's HQ

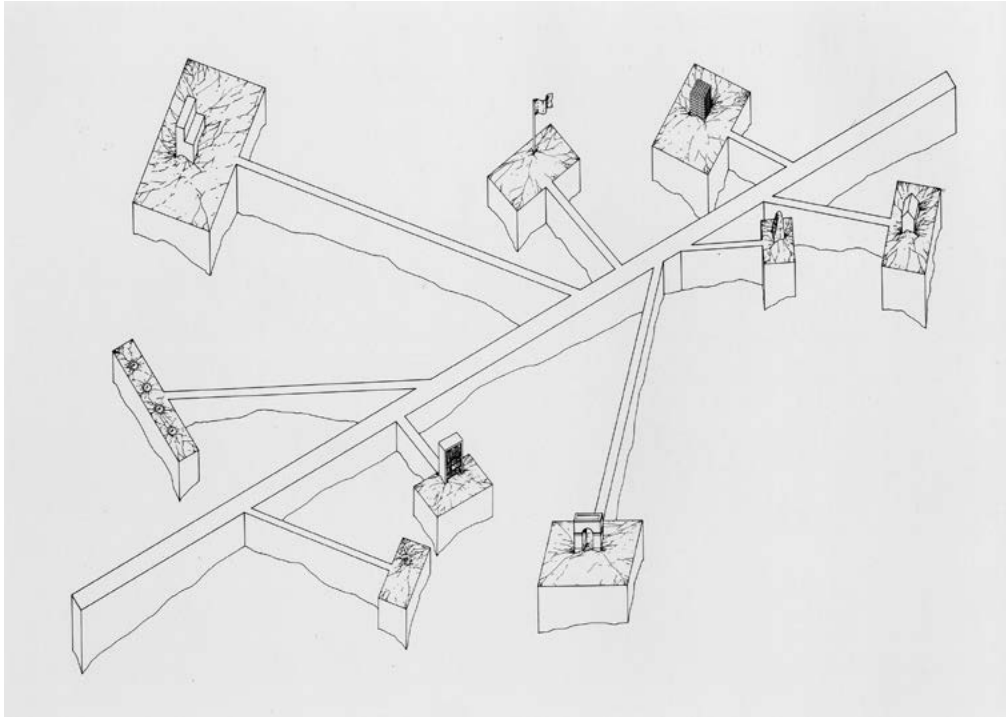
SINES: SEASIDE LOGISTICS

Opening 8 Oct., 4pm

10 Oct.—11 Dec.



THE FORM OF FORM



Hans Dieter Schaal, Paths and Passages 1978, Germany ©Hans Dieter Schaal

Curator
Diogo Seixas Lopes

Contents
**MICROCITIES
/ SOCKS STUDIO**

Exhibition design
**Johnston Marklee
Nuno Brandão Costa
Office KGDVS**

Co-producer
MAAT

Venue
**MAAT
Pátio do Carvão
Av. de Brasília, Central Tejo
1300-598 Lisbon**

Opening Times
**Every day (except
Tuesdays) 12am-8pm
Free admission**

One of architecture's fundamental legacy is its own form. Not only is history built from its visual universe, but form is also a common language that brings together architects from all over the world in a collective conversation. In this exhibition, which proceeds from a potentially infinite repository, the participants build a dialogue that challenges notions of authorship and the limits of form.

Functioning as a "conversation," the exhibition's narrative develops through a number of spaces inspired by examples of architectural designs selected by Johnston Marklee, Nuno Brandão Costa and Office KGDVS within their respective bodies of work. Each of these spaces is designed to house content chosen from the extensive Socks image database.

In their turn, Mariabruna Fabrizi and Fosco Lucarelli of Socks Studio were invited to reflect upon a selection of examples taken from their own platform (www.socks-studio.com). The Socks format has evolved over the years from an online magazine to become a platform for

speculation and discussion that also draws on Microcities' own architectural projects. Through this selection, Socks decided to highlight the permanence of form and its capacity to condense a set of values into any visible thing.

The language of architecture is explored through a sample of construction drawings, landscape interventions, urban plans, artistic investigation, and other elements. Originating from different time periods and regions of the world, the content highlights what remains constant and what changes, identifying analogies and affinities in the creation of the built environment. Organized along twelve interlinked spaces, with each space incorporating images related to a core element, the exhibition will define a continuous seam of works that are directly inter-related, be it through affinity or opposition.

Curated by Diogo Seixas Lopes, the The Form of Form exhibition is also a process. The ultimate aim is for it to be a "meeting space" that can demonstrate the meaning of form in architectural design, in the past, present and future.

BUILDING SITE



Cedric Price, McAppy Report, 1972-1973. © Canadian Centre for Architecture

Just as the forms of architecture determine the organization of building sites, so technology and economy organize methods of production – with a significant social impact. These conditions constrict and stimulate architectural conception.

From the communication between design and construction, the organization of time and money, to the rhetoric of politics and technological innovations, all the cards for architecture-to-be are played on the building site.

The work of the architect serves as a counterbalance to the client's anxiety in relation to many factors, including the need to match building deadlines and cost optimisation with quality standards. In a building project many diverse interests require negotiation and the role of architecture unfolds as projects become buildings.

The exhibition is organized into modules, which serve as anchors for exploring different approaches.

Presented in partnership with the Canadian Centre for Architecture (CCA), one of the modules draws from the professional archives of Cedric Price. It focuses on a report he produced in the 1970s aimed at improving work conditions on building sites.

Another example – presented in partnership with the Cité de l'Architecture & du Patrimoine – takes a look at the entrepreneurial strategy of François Hennebique who, in the late nineteenth century, mastered construction in reinforced concrete and paved the way for the concentration of technical knowledge in the field.

In the other modules different perspectives are presented: Usina, an architectural collective that fosters self-help housing developments in the Brazilian megalopolis of São Paulo; the process leading to the construction of OMA's Casa da Música, addressing the role of time in construction; the example of the project for the reconstruction of the Neues Museum in Berlin by David Chipperfield Architects, looking specifically at the communication unfolding between the various actors involved; the young architectural practice Skrei and their approach to material qualities; and finally a view upon the coldwar choreographies generated to serve as a stage for US and USSR heavy pre-fabricated steel and concrete panel construction.

The exhibition allows for cross-readings on issues generated by building sites, inviting the viewer to reflect on the transformations in contemporary building sites, the challenges they face and the impact they have on the practice of architecture.

Curator
André Tavares

Co-curators
Giovanna Borasi (CCA)
Hugo Palmarola
Ivo Poças Martins
Jorge Carvalho
Pedro Alonso
Simon Vaillant (CAP)

Venue
Calouste Gulbenkian
Foundation Lower Gallery
- Main Building
Av. de Berna 45 A
1067-001 Lisbon

Opening Times
Every day (except
Tuesdays), 10am-6pm
Free admission

Invited Studios
David Chipperfield
Architects
OMA
SKREI
Usina

Special Guest
Michael Wesely
Exhibition design
SAMI-arquitectos

Institutional partners
CAP – Cité de l'Architecture
& du Patrimoine
CCA – Canadian Centre for
Architecture

Co-producer
Calouste Gulbenkian
Foundation

THE WORLD IN OUR EYES



© INSTANT HUTONG (Marcella Campa & Stefano Avesani)

Description is a project. Architects have deployed a sophisticated arsenal of tools proper to their trade and have borrowed techniques and expertise from other disciplines to generate descriptions and analysis of the physical world. These actions intersect with the concerns of economists, planners, developers and policy makers, engaging multiple audiences in novel understandings of the city. While doing so, architects have also created and refined the tools of their own discipline, in order to generate meaningful representations of urban and territorial conditions.

With the Worl in Our Eyes, Fig Projects proposes to observe how practitioners engage with the description of the physical transformation of spaces responding to processes of globalization. The selected projects are organized into six groupings, responding either to the methodology used or to the main object of description:

Participants

Alexander Eisenschmidt
Alex Lehnerer
Anthony Acciavatti
Atelier Bow Wow
Atelier Kempe Thill +
Baukuh + GRAU + Lola
AWP Office for Territorial
Configuration
Christ & Gantenbein
Cities without Ground

Clare Lyster
Cohabitation Strategies
Danny Wills
Design Earth
Diploma Unit 14
Architectural Association
Felipe Correa
Hashim Sarkis
Hector Design Service
Ido Avissar – List

Instant Hutong
Interboro Partners
Kate Orff – Scape
Keith Krumwiede
LCLA Office + Charlotte
Hansson
Manuel Herz Architects
MAP Office
Neeraj Bhatia
Nicholas de Monchaux

Pedro Pitarch
Piovenefabi + 51N4E
Rafi Segal + Els Verbakel
Rua Arquitetos
Schwellenatlas
Studio Works
Superpool
Work AC
Xaveer De Geyter
Architects

Curator
FIG Projects

Exhibition design
Barão–Hutter

Co-producer
Centro Cultural de Belém
Foundation

Venue
Garagem Sul
Centro Cultural de Belém
Praça do Império
1449-003 Lisbon

Opening Times
Tuesday to Sunday,
10am-6pm
Tickets: 4 euros

“Structures and Superstructures”; “Notations of the Spontaneous City”; “The Predominance of Geometry”; “Taxonomical Indexing”; “For and Against Sprawl”; “Vast Geography”.

These narratives and representations engage wide-ranging audiences in architecture and beyond, thus entering the political sphere. In some cases these descriptions of architecture seek to generate awareness, in others they are explicit critiques of occurring phenomena, and in yet other cases they aim to mobilize stakeholders around alternative visions of the future. Architects have demonstrated the capacity to attentively observe the city, as well as the ability to create the complex apparatuses of research needed to understand and map it. Description is still design, this exhibition intends to celebrate how this powerful hypothesis continues to resonate today.

SINES: SEASIDE LOGISTICS



© A Terceira Água, FAUP

Curators
Marta Labastida
Rui Mendes

Exhibition design
Rui Mendes

Venue
Triennale's HQ
Campo de Santa Clara 145
1100-474 Lisboa

Opening times
Tuesday to Saturday
12am-8pm
Free admission

Sines: Seaside Logistics is an exhibition about the relationship between the city, its industrial and infrastructural elements, and landscape.

Mythically intended to be the logistic hub of the whole Iberian Peninsula, Sines is a large harbor and industrial infrastructure built upon a former fishing village in the 1970s. How can architecture intervene in the mechanical creation of logistic infrastructures? How can we approach issues such as shared uses and the borderline spaces between the city proper and the waterfront in a context dominated by large-scale infrastructures?

The exhibited material is the result of a competition initiated in the framework of the Triennale Millennium bcp Universities Award, involving 14 Portuguese schools and universities of architecture, directly challenged by the curators to provide possible answers to these questions. The curators set forth four themes for reflection and

design: Scale – the importance of scale in the intervention strategy; Limits – the breadth of the waterfront area itself, and artificial and natural mutations; Production – complex and integrated forms of habitability; Time – absorbing the past and integrating the uncertain future. The exercise so formulated explores the boundaries between poetic transformation and political experience.

From more than 50 submissions received, 20 projects were selected and are presented in three sections in accordance with a flexible exhibition structure displayed in the rooms of Triennale's HQ.

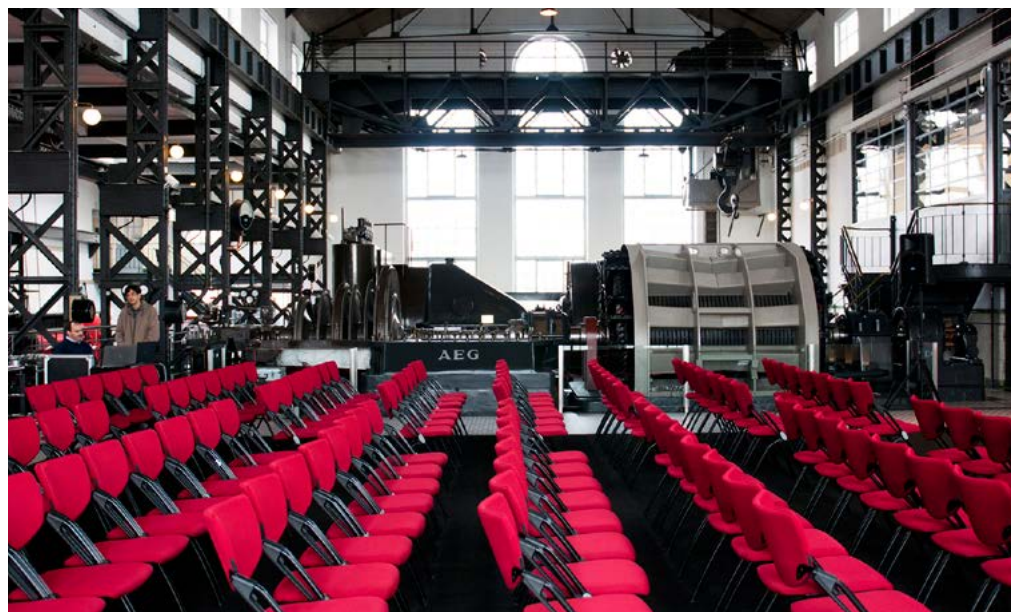
A Terceira Água by Flora di Martino, Rita Martins and Saule Grybenaite, of the Faculty of Architecture of Porto University, was chosen as the winning project as it raised the most relevant questions and best strategies to deal with the territorial condition of Sines.

Universities

Escola Superior Artística do Porto
Escola Superior Gallaecia
Fundação Ensino e Cultura Fernando Pessoa
ISCTE - Inst. Universitário de Lisboa
Universidade Autónoma de Lisboa
Universidade de Coimbra
Universidade de Évora

Univ. de Lisboa-Faculdade de Arquitectura
Univ. de Lisboa-Inst. Superior Técnico
Univ. de Lisboa-Inst. Superior de Agronomia
Universidade Lusíada de Lisboa
Universidade Lusófona de Lisboa
Universidade do Minho
Universidade do Porto

TALK, TALK, TALK.



Talk 17, Building Site
Thursday, 17 November
10am — 6.30pm
Calouste Gulbenkian Foundation

Talk 18, World in Our Eyes
Friday, 18 November
3pm — 10.30pm
Centro Cultural de Belém

Talk 19, The Form of Form
Saturday, 18 November
10am — 6.30pm
MAAT, Museum for Art, Architecture and Technology

The main exhibitions will be the point of departure for three conferences on 17, 18 and 19 November, another important moment in the Triennale's program. Held in venues adjacent to the exhibitions, the debates will bring together prominent architects, researchers and other key players in the international architecture scene.

The talks will deepen the reflection on the themes addressed by the exhibitions, offering new points of view, pointing towards new issues and opening new avenues of debate.

Talk 17, Building Site

If architecture mirrors society, contemporary shifts in construction practices reflect upon design and its meaningfulness. To tackle these shifts and explore their capacity to equate to architectural practice, this daylong debate will bring architects, engineers, historians and scholars together to converge differing views and respond to the key enquiry: To what extent does the organization of building sites affect architecture?

Participants

André Tavares ^(PT), Pedro Fiori Arantes ^(BR),
Eike Roswag ^(DE), Matthew Fineout ^(US),
Rui Furtado ^(PT), Émilien Robin ^(FR),
Adrian Forty ^(UK), Bárbara Range ^(PT), Grafton Architects ^(IR)

Talk 19, The Form of Form

Citizens live among forms; architectural forms have endured the past and they will populate the future. As a visual construct, architecture encompasses a full range of responsibilities and hidden values. Before we can think about it as a means of design, architecture is a type of knowledge. This daylong debate aims to dissect architectural forms to reveal the tensions between authorship, responsibility and theory.

Participants

Aristide Antonas ^(GR), Pier Paolo Tamburelli ^(IT), Michael Meredith & Hilary Sample ^(US), Bernardo Rodrigues ^(PT),
Manuel Montenegro ^(PT),
Irénee Scalbert ^(UK), Eric Lapierre ^(FR), Emanuel Christ ^(CH),
Leonor Macedo ^(PT), Martino Stierli ^(US/CH)

Talk 18, The World in Our Eyes

Description is a project. In the past two decades representation has acquired a powerful role, one supported by a renewed interest in graphic and visual tools as means to convey information and to decipher reality. Narratives and representations can be used to engage wide-ranging and not always architectural audiences, thus entering a political sphere.

How does this impressive hypothesis resonate today?

Participants

FIG Projects ^(CA), Hashim Sarkis ^(US), Alessandra Cianchetta ^(FR), Martino Tattara ^(IT/BE), Manuel Herz ^(CH),
Joaquim Moreno ^(PT), Sébastien Marot ^(FR)

Tickets: www.trienaldelisboa.com
Early Bird Tickets: Until 15 Oct.

SATELLITES

Unfolding around Lisbon, its outskirts and beyond, this programme expands the geographical and thematic reach of the Triennale

Teatro Thalia, Lisbon

RUINS OF THE APOCALYPSE

Opening: 7 Oct., 9:30pm Dates: 8 Oct. to 10 Dec.

Galeria Quadrum, Lisbon

THE POWER OF EXPERIMENT

Exhibition opening: 24 Nov.
Dates: 25 Nov. to 9 Dec.

Galeria dos Paços do Concelho, Lisbon

LETTERS TO THE MAYOR

Opening: 8 Oct., 5:30pm
Dates: 10 Oct. to 30 Nov.

Venice — Oslo — Lisbon

2016—ENNIALS

Finale debate: 11 Dec., Lisbon

Palácio Pombal, Lisbon

A TRIANGULAR HISTORY

Opening: 8 Oct., 8pm
Dates: 9 Oct. to 11 Dec.

Casa Roque Gameiro, Amadora

THE LIMITS OF LANDSCAPE

Opening: 8 Oct., 11:30am
Dates: 9 Oct. to 11 Dec.

Presídio da Trafaria, Almada

OBJECT —PROJECT

Opening: 14 Oct., 4pm
Dates: 15 Oct. to 11 Dec.

Satellites

RUINS OF THE APOCALYPSE

Venue

Teatro Thalia

Estrada das Laranjeiras, 211, 1649-018 Lisbon



Cities of Gold and Mirrors (Film Still), 2009 ©Cyprien Gaillard, courtesy Spruth Magers and Laura Bartlett Gallery, London

Participant

Cyprien Gaillard

Opening times

8 Oct. — 11 Dec.

Mondays & Fridays

10am-8pm

Saturdays

8 Oct, 19 Nov., 10 Dec.

10am-3pm

Sundays

9 Oct, 20 Nov., 11 Dec.

4pm-8pm

This Satellite presents an installation of Cyprien Gaillard's video works in which architecture triggers questions about time and human behavior. Gaillard's work is a form of fighting nostalgia, resorting to anachronism, it combines structures and references to classic painting and landscaping. The result is an entropic landscape, almost Machiavellian, pointing at the paradoxical obsolescence of the future.

Satellites

LETTERS TO THE MAYOR

Venue

Galeria dos Paços do Concelho

Praça do Município, 1149-014 Lisbon



© CML

Curator

Ivo Poças Martins

Co-production

EGEAC

Concept

**Storefront for Art and
Architecture**

Opening times

**Monday to Friday
10am-6pm**

Letters to the Mayor: Lisbon aims to explore the potential of an ephemeral architectural event, such as a biennial or a triennial, for creating an enduring contribution to its host city. With this in mind, all participants in "The Form of Form," the 4th edition of the Lisbon Architecture Triennale, were invited to take part in this exhibition by writing letters to Lisbon's Mayor. As the letters come from a wide spectrum of countries and regions, the ideas and proposals range from external, comprehensive views of the city, to very specific insights on its governance, grounded in detailed knowledge of how the city functions, its needs and its aspirations.

The purpose was also to ensure the letters would be delivered by hand to their recipient – as a very particular postal service. The opportunity to hold the exhibition in Lisbon's Municipal Gallery, at the entrance of the very same building that houses the office of Lisbon's Mayor is both a symbolic and literal way of getting the message through. One year prior to the local elections, the Lisbon City Council's openness to hosting the exhibition can already be interpreted as a form of response.

Satellites

A TRIANGULAR HISTORY

Venue

Palácio Pombal

Rua de O Século 79, 1200-433 Lisbon



©Pedro Bandeira

Curator

Pedro Bandeira

Participant

Eduardo Souto de Moura

Conceived for the blue room of the Marques do Pombal Palace in Lisbon, this sculptural essay deals with history, space, and form with the freedom of art. It aims to express the perennial sense of architectural form. It draws from the pyramid, evoking three distant projects in time and materiality: the great Pyramid of Cheops in the Giza necropolis, built around 2560 BCE; the unbuilt concrete reversed pyramid designed in 1954 by Oscar Niemeyer for the Caracas Modern Art Museum; and the glass pyramid by Ieoh Ming Pei built in Paris at the Louvre in 1984.

Labeled as an heir to the modern movement, and obsessed with Mies van der Rohe's built and published designs, Souto de Moura does not hesitate to appropriate the history of architecture, its forms and meanings, even if that means a loss of historical references in the search for new significations. This use and even abuse of history does not relate to the proclaimed "continuity" of architectural history and the legacy of modern architecture. It can be argued that the architect is primarily interested in the autonomy of form, bringing into the design the illusion of language's autonomy, or even architecture's autonomy. Yet, we can always decipher occult or explicit relations among things, and, as Aby Warburg did, relate the significance of forms and objects. While form matters, its meaning can remain a riddle, or a gift for historians or someone passing by. If the architect has to stand for the formal and constructive quality of his designs, he can claim the freedom of art for his creations. (Pedro Bandeira, curator)

Opening times

**Thursday to Sunday
10am-8pm**

Satellites

OBJECT —PROJECT

Venue

Antigo Presídio da Trafaria

Praceta do Porto de Lisboa, 2825-879 Trafaria



© Godofredo Pereira

Curator

Godofredo Pereira

Participants

**Adrian Lahoud
Alexandra Vougia
Francisco Silva
Ivan Gallardo
Joana Dias Pereira
Maria Giudici
Olga Balaoura
Paulo Pardelha
Platon Issaias
Susana Caló
Tiago Mota Saraiva**

Opening times

**15 Oct — 23 Oct
Everyday, 10am-6pm
24 Oct — 11 Dec
Friday to Sunday
12am-8pm**

Seminars

**Objects and Collectives
14 Oct., 4:30pm-6:30pm
Contagion
25 Nov., 2pm-7pm**

Object-Project explores the idea that identification with objects makes identification with the other possible. Focusing on the relationship between Lisbon and the Trafaria waterfront on the opposite bank of the Tagus River, the exhibition identifies various logistic elements that characterize the urban growth of the "other side", from religious movements to industrial developments. Highlighting the role of labour organizations, community and socio-cultural associations, it gives visibility to the everyday practices which, throughout the 20th century, turned the economic and institutional deficiencies of the Trafaria area into a possible scenario of survival. Two lines of inquiry: that of the object which, while it is determined by logistical principles, adapts autonomously to its urban context; and that of collective projects, in the course of which the architectural object participates in processes of political and social transformation.

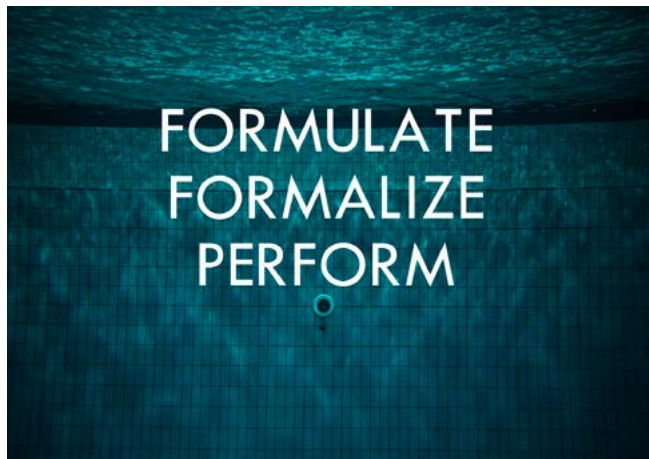
Satellites

THE POWER OF EXPERIMENT

Venue

Galeria Quadrum

Rua Alberto de Oliveira, 1700-019 Lisbon



The Power of Experiment; Design Artéria © Rui Pinheiro

Curator

Artéria

Invited schools

Aarhus School of

Architecture (DK)

NTNU-Faculty of
Architecture and Fine Arts -
Trondheim (NO)

Oslo School of Architecture
and Design (NO)

Oulu School of Architecture
(FI)

Tromsø Academy of
Landscape and Territorial

Studies (NO)

Umeå School of

Architecture (SE)

Universidade do Minho

Escola de Arquitectura

(PT)

Universidade de Évora

Departamento de

Arquitectura (PT)

Opening times

Tuesday to Friday

10am-7pm

Saturday and Sunday

2pm-7pm

Nordic architecture has had a recognized influence on Portuguese architects, with Távora, Siza and Hestnes having had first-hand experience of the works of architects such as Aalto, Asplund and Fehn. Despite the distance and differences between them, Nordic and Portuguese architecture share the same lasting tradition – the ability to adapt architecture to its context. Nordic architecture schools are currently focusing on the specificity of local resources and opportunities offered by specific contexts in a series of pioneering master degree programmes that address local issues, whilst geographically broadening the spectrum of discussion towards local and global emerging practice of the profession that is strongly committed to the world in transformation. The Power of Experiment is a challenging re-encounter in the form of a workshop-exhibition-publication.

Satellites

THE LIMITS OF LANDSCAPE

Venue

Casa Roque Gameiro

Praceta 1.º Dezembro 2, 2700-668 Amadora



© Archive Amadora City Hall

Participants

Manon Mollard

Nuno Cera

Plan Común

Opening Times

Tuesday to Saturday

10am-5:30pm

Sundays

2:30pm-6pm

The Limits of Landscape takes Amadora, a municipality adjacent to the city of Lisbon - and commonly perceived as a peripheral dormitory - as the ground for questioning the potential of such rapidly urbanized places. The blurred fringe in which this exhibition operates reflects the sense of loss of a supposed idyllic bucolic past as it gave way to a sort of informal generic Babylon. Casa Roque Gameiro, built by and for the notable watercolourist born in the mid-19th century, is a venue that condenses all these tensions: a glorified rural scenario from the past, now surrounded by mid-rise residential buildings that sever its former relationships with a (still) powerful natural landscape. The combined perspectives of the Portuguese artist Nuno Cera and the young architecture practices of Manon Mollard and Plán Comun (both selected within the context of the Future Architecture Platform) will problematize these preconceptions, shedding light on the everyday life and specificities of Amadora.

2016—ENNIALS

A Geography of Temporary Territories



©Rute Figueiredo

Curators

Léa-Catherine Szacka

Rute Figueiredo

Front

27 May, Venice Architecture Biennale

Abdelkader Damani ^(DZ) —Director, FRAC Orléans

David Basulto ^(CL) and **James Taylor-Foster** ^(UK)

—Curator and Assistant Curator, 2016 Nordic Pavilion

Martino Stierli ^(CH) —Philip Johnson Chief Curator, MoMA

Form

11 December, 7pm, Lisbon Architecture Triennale

André Tavares ^(PT)

—Chief Curator, Lisbon Architecture Triennale

After Belonging Agency ^(ES)

—Curatorial Team, Oslo Architecture Triennale

Beatriz Colomina ^(ES) and **Mark Wigley** ^(NZ)

—Curators, Istanbul Design Biennale

Belonging

10 September, Oslo Architecture Triennale

Hege Maria Eriksson ^(NO)

—Former Director, Oslo Architecture Triennale

José Mateus ^(PT) —Chairman, Lisbon Architecture Triennale

Sarah Herda ^(US) —Director, Graham Foundation

First in Venice and Rotterdam, and then in Oslo, Istanbul and Lisbon – 2016 will be a year full of “ennials”—be they biennials or triennials a year in which Europe will be as if in a continuous loop, a geography of temporary territories. These large-scale events will expose the architecture community to a wealth of ideas on different topics. But what is all this about? What place does the emerging discourse occupy? Will it redefine and expand the field of architecture? Will it have a real impact on our cities?

Even if they constitute an established cycle of repetition, these are more than isolated points on the map they interact in temporary – both geographic and intellectual territories.

They foster the transfer of ideas and generate new exchanges within the profession. In other words: they are far from innocence.

The “ennials” operate as nerve centres they change sites and architectural players, while striving to provide a forum for new places and new people. Linking these nerve centres in a continuous loop could provide one way to assess the current status of this phenomenon in architecture. Taking the key notions of “front”, “belonging”, and “form”, as proposed by Venice, Oslo and Lisbon as their starting points, this cycle of three debates will reflect on the challenges facing architecture and the real and fictional configurations of this type of event.

ASSOCIATED PROJECTS

From an international call, this selection of projects will be carried out in Lisbon and adjacent municipalities, widening the exploration of new architectural paths.

Continual Collective Construction ^{Film}

— Davidson Rafailidis

Venue Cinema Ideal, Rua do Loreto 15, Lisbon

Dates and Times see Triennale's website

Dates 6 Oct.-9 Oct., screening 2:30pm

Free Admission



© Davidson Rafailidis

This 3 minute stop-motion animation, constructed with drawings and collages, describes how a building's form is defined, and evolves over time.

Other Lisbon ^{Guided tours}

— Patrícia Robalo Ribeiro

Venue Various

Launch debate: 7 Oct., 2pm

Dates 8,31 Oct. & 5, 12, 19, 26 Nov. & 3 Dec.



© Patrícia Robalo Ribeiro

The purpose of Other Lisbon is to discuss about the shaping of collective space through walks around diverse urban contexts.

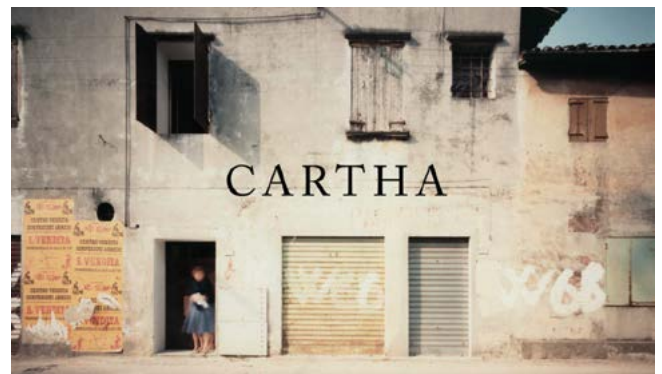
Cartha — Cartha Magazine

Venue Reservatório da Mãe d' Água das Amoreiras,
Praça das Amoreiras 10, Lisbon

Dates and Times see Triennale's website

Dates 10 Oct.-14 Oct.

Free Admission



© Guido Guidi, Veneto Series

Cartha Magazine will document a whole year of events concerning the Triennale in the form of periodic publications and, finally, a book.

The World of Charles and Ray Eames — at MAAT

Venue MAAT Av. De Brasília, Central Tejo, Lisbon

Opening 5 Oct., 3pm

Dates 6 Oct.-9 Jan.



© Tristan Fewings / Getty images

A wide perspective of the work and life of the Eames, from their celebrated realisations to less known experiments.

ASSOCIATED PROJECTS

Plataforma Trafaria Documentary, Workshop — **ConstructLab**

Venue Antigo Presídio da Trafaria, Praceta do Porto de Lisboa, Trafaria
Dates 22-29 Oct.



© Atelier Fernandez & Serres

The exhibition of two works by Fernandez & Serres show how site, building components and history are used as matter to form architecture.

Labor, Film — **Richard Seymour, Pete Collard, Tim Abrahams**

Venue Palácio Pombal, Rua de O Século 79, Lisbon
Opening 8 Oct., 7:30pm
Dates 9 Oct.-11 Dec.
Free Admission



© Pete Collard

A film installation on today's global building drive, through the presence of Portuguese workers, builders, architects or engineers in London.

The Club Events — **Bureau A**

Venue Palácio de Pombal, Rua de O Século 79, Lisbon
First party 8 Oct., 7pm
Dates 14, 29 Oct., & 19 Nov., 10 Dec



© Giesemann Schulz

Exploring the less obvious architectural dimensions of nightlife, The Club will propose a publication and other events held at an installation in a nightclub.

The Shape of Plain Exhibition — **Eliana Sousa Santos**

Venue Calouste Gulbenkian Foundation
Av. de Berna 45A, Lisbon
Opening 6 Oct., 6:30pm
Dates 7 Oct.-9 Jan.



© Paulo Varela Gomes and João Vieira Caldas, Portugal, 1990

This exhibition and symposium will gravitate around images of the vernacular, paired with contemporary architecture production.

ASSOCIATED PROJECTS

Matière Sensible Exhibitions

— Fernandez & Serres

Venue Palácio Pombal, Rua de O Século 79, Lisbon

Opening 8 Oct., 7:30pm

Dates 9 Oct.-11 Dec.

Free Admission



© Atelier Fernandez & Serres

The exhibition of two works by Fernandez & Serres show how site, building components and history are used as matter to form architecture.

The Thickness of the Limit Installation

— Embaixada Arquitectura and University of Western Australia

Venue Triennale's Headquarters

Campo de Santa Clara 145, Lisbon

Opening 8 Oct., 4:30pm

Dates 11 Oct.-10 Dec.



© Embaixada Arquitectura

The results of this architecture studio, questioning the notion of "limit" in western cities will be exhibited in the form of a 1/1 model.

White Lime Alprenca Exhibition

— Manuel Caeiro

Venue Galeria Carlos Carvalho – Arte Contemporânea

R. Joly Braga Santos, Lisbon

Opening 2 Nov., 6pm

Dates 3 Nov.-31 Dec.



© Manuel Caeiro

An exhibition on the work of the artist Manuel Caeiro, closely engaged with the architectural thought and spatial representation.

Amadora International Comics Festival

Venues Various

Opening 21 Oct., see www.amadorabd.com for programme

Dates 22 Oct.-6 Nov.



© Hugo Lima

An annual cultural event dedicated to comics, its 27th edition will unfold in 2016 under the title *Space vs Time* given its collaboration with the Triennale.

Awards

LIFETIME ACHIEVEMENT

Lisbon Triennale Millennium bcp



Kenneth Frampton © Trienal de Lisboa

Jury

Andres Lepik
Bijoy Jain
Cecilia Puga
Jorge Figueira
Juan Herreros
Niall Hobhouse

Winner Announced
8 Oct., 3pm Triennale's HQ

Winner's Conference
15 Nov., CCB Main
Auditorium

Now in its fourth edition, this award distinguishes the individual or studio whose work and ideas have influenced and continue to have a deep impact on current architectural practice and thought. Awarded on the basis of criteria of excellence of the contribution to architectural and spatial practice, the Lisbon Triennale Millennium bcp Lifetime Achievement Award has been bestowed in previous editions upon Vittorio Gregotti (2007), Álvaro Siza Vieira (2010) and Kenneth Frampton (2013).

The winner will be announced on 8 October, the award ceremony will take place on 15 November in the CCB Main Auditorium.

The winner will receive an original artwork by José Pedro Croft, the invited artist for the Official Portuguese Representation at the next Venice Art Biennale in 2017.

Awards

DÉBUT

Lisbon Triennale Millennium bcp



Phalanstery Module © Jimenez Lai

Jury

André Tavares
Fernanda Bárbara
Luís Santiago Baptista
Margarita Jover
Mimi Zeiger
Tetsuo Kondo
Tim Abrahams

Winner Announced
8 Oct., 3pm Triennale's HQ

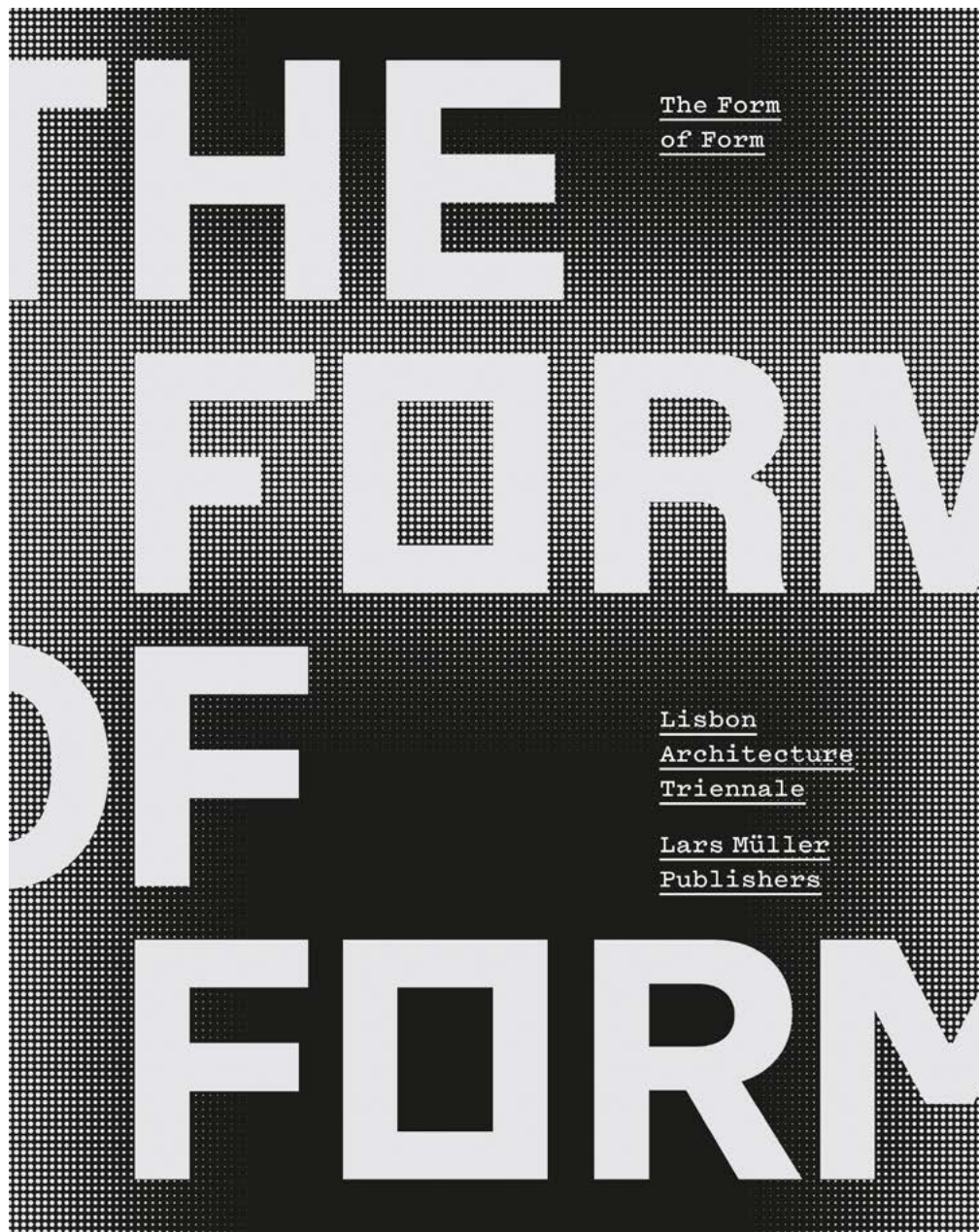
Winner's Conference
7 Dec., São Luiz Teatro
Municipal

For the second time the Lisbon Architecture Triennale will be awarding a Début award to a young architect (under the age of 35) or practice to celebrate their achievements and promote their career. With this prize Triennale to support new voices and forms of practice, also contributing to young professionals' creative, and professional growth at a crucial and potentially transformative stage in their career.

As a result of an open call for submissions, 10 finalists were selected:

Al Borde, Ecuador
ASA STUDIO, Ruanda
Carles Enrich, Spain
El Umbral, Mexico
Hevia + Urzúa, Chile
Paulo Manuel do Vale Afonso, Portugal
Pedro Pitarch, Spain
PLURAL, Slovakia
Terra e Tuma - Associated Architects, Brazil
UMWELT (Scheidegger & Garcia Partarrieu), Chile

BOOK



Editors
André Tavares
Diogo Seixas Lopes

Partners
Graham Foundation
Lars Müller Publishers

Design
João Faria /Drop
Launch Debate, 5 Oct.,
6pm, at Gulbenkian
Foundation

The Form of Form Book -
40€
Number of pages: 208
Dimension: 21,6 x 26,2 cm
International & National
Distribution
In Portugal, at the venues,
specialized Bookstores,
NomadicLars Müllerand
FNAC. LivrariaNomadic
Lars Müller

Booklets
7€/each
Number of pages
68-80

Architects transform the world with architecture, and regardless of the perspective adopted in discussing those transformations it all comes down to the forms the architects are able to produce or preserve. Despite the historical significance of form in architecture, the subject is frequently ignored in architectural debate. The Triennale publications — an English book published by Lars Müller and a series of Portuguese booklets — will explore a variety of ideas relating to form, not only through aesthetic and technological approaches but also from social and political positions. The contents underline the cultural and technical relevance of architecture to society. The publications will be linked by a narrative sequence that unfolds in a number of episodes: one pertaining to form and authorship (The Form of Form), another

focusing on processes and the construction of forms (Building Site), and a third on cities and the complexities of analysing and representing urban forms (The World in Our Eyes). The final episodes (The Limits of Landscape and Ruins of the Apocalypse) address the contemporary challenges of architectural practice. A series of four discussions in between the chapters connects the threads to form a cohesive theme that shapes the book. The Lisbon Triennale also launches four booklets, one for each main exhibitions that are distributed at CCB, MAAT, Triennale's HQ, Gulbenkian Foundation. Just available in Portuguese.

PARTICIPANTS

A

Abdelkader Damani
Adrian Forty
Adrian Lahoud
After Belonging Agency
Alessandra Cianchetta
Alex Lehnerer
Alexander Eisenschmidt
Alexandra Vougia
Álvaro Domingues
Amanda Levet Architects
André Tavares
Andres Lepik
Anthony Acciavatti
António Guerreiro
Archikidz Lisboa
Aristide Antonas
Arquivo 237
Artéria
Atelier Bow Wow
Atelier Bugio
Atelier Kempe Thill +
Baukuh + GRAU + Lola
AWP Office for Territorial
Configuration

B

Barão – Hutter
Bárbara Rangel
Beatriz Colomina
Bernardo Rodrigues
Bijoy Jain
Bureau A

C

CAP – Cité de l'Architecture
& du Patrimoine
Carrilho da Graça
Arquitectos
Cartha Magazine
CCA – Canadian Centre for
Architecture
Cecilia Puga
Christ & Gantenbein
Cities without Ground
Clare Lyster
Cohabitation Strategies
Construct Lab
Cyprien Gaillard

D

Danny Wills
David Basulto

David Chipperfield
Architects
Davidson Rafailidis
Design Earth
Diogo Seixas Lopes
Diploma Unit 14
Architectural Association

E

EDA – Ensaios e Diálogos
Eduardo Souto de Moura
Eike Roswag-Klinge
Eliana Sousa Santos
EMBAIXADA Arquitectura
Émilien Robin
Éric Lapierre

F

Felipe Correa
Fernanda Bárbara
Fernandez & Serres
FIG Projects
Francisco Silva
Frederico Duarte

G

Giovanna Borasi (CCA)
Godofredo Pereira
Grafton Architects

H

Hallo Festspiele
Hashim Sarkis
Hector Design Service
Hege Maria Eriksson
Hugo Palmarola

I

Ido Avissar – List
Inês Moreira
Instant Hutong
Interboro Partners
Irénée Scalbert
Ivan Gallardo
Ivo Poças Martins

J

James Taylor-Foster
Joana Dias Pereira
João Luís Carrilho da Graça
João Mendes Ribeiro
Joaquim Moreno
Johnston Marklee

Jorge Carvalho
Jorge Figueira
José Mateus
José Pedro Croft
Juan Herreros

K

Kate Orff – Scape
Keith Krumwiede

L

LCLA Office + Charlotte
Hansson
Léa-Catherine Szacka
Leonor Macedo
Livraria A + A
Luís Santiago Baptista

M

Manon Mollard
Manuel Caeiro
Manuel Herz Architects
Manuel Montenegro
MAP Office
Margarita Jover
Maria Guidici
Mark Wigley
Marta Labastida
Martino Stierli
Martino Tattara
Matthew Fineout
Michael Meredith & Hilary
Sample
Michael Wesely
MICROCITIES / SOCKS
Mimi Zeiger

N

Neeraj Bhatia
Niall Hobhouse
Nicholas de Monchaux
Nuno Brandão Costa
Nuno Cera
Nuno Grande

O

Office KGDVS
Olga Balaoura
OMA

P

Patrícia Robalo Ribeiro
Paulo Pardelha

Pedro Alonso
Pedro Bandeira
Pedro Domingos
Pedro Fiori Arantes
Pedro Pitarch
Pete Collard
Pier Paolo Tamburelli
Piovenefabi + 51N4E
Pippo Ciorra
Plan Común
Platon Issaia

R

Rafi Segal + Els Verbakel
Richard Seymor
Rua Arquitetos
Rui Furtado
Rui Mendes
Rute Figueiredo

S

SAMI-arquitectos
Sarah Herda
Schwellenatlas
Sébastien Marot
Simon Vaillant (CAP)
SKREI
Storefront for Art and
Architecture
Studio Works
Superpool
Susana Caló

T

Teresa Amaro Alfaiate
Tetsuo Kondo
Tiago Mota Saraiva
Tim Abrahams

U

University of Western
Australia
Usina

W

Work AC

X

Xaveer De Geyter
Architects

Chief curators

ANDRÉ TAVARES (PT)

André Tavares has been running Dafne Editora since 2006, exploring publishing as a form of cultural and architectural practice. He holds a doctorate from the University of Porto's Faculty of Architecture (FAUP), where he completed his thesis on the presence of reinforced concrete in architects' design strategies in the early 20th century in 2009. Based on his research in Mendrisio, Paris and Sao Paulo, André has published several books addressing the international circulation of knowledge amongst Portuguese-speaking architects, including *Arquitectura Antituberculose* (FAUP-publicações, 2005), *Os fantasmas de Serralves* (Dafne, 2007), *Novela Bufo do Ufanismo em Concreto* (Dafne, 2009) and *Duas obras de Januário Godinho* (Dafne, 2012). His last book, *The Anatomy of the Architectural Book* (Lars Müller, 2015), explores the connections between book culture and architectural practice.

Chief curators

DIOGO SEIXAS LOPES (PT)

Diogo Seixas Lopes (1972 – 2016) obtained his degree in architecture at the Technical University of Lisbon and also holds a PhD from the Swiss Federal Institute of Technology of Zurich. He has been a guest professor at the University of Coimbra and Carleton University in Ottawa and was deputy director of the *Jornal Arquitectos* magazine. His book publications include *Melancholy and Architecture. On Aldo Rossi* (Park Books, 2015). Together with Patrícia Barbas, Diogo founded the Barbas Lopes Arquitectos architectural firm, which collaborated with Gonçalo Byrne on the conversion of the Thalia Theatre in Lisbon. Amongst other ongoing projects, the studio is currently working on the design of a 17-storey building in the centre of Lisbon. The firm's work was nominated for the Icon Awards 2012, Designs of the Year 2013 and Mies van der Rohe Award 2013.

Assistant Curator

IVO POÇAS MARTINS (PT)

Ivo Poças Martins was born in Porto in 1980 and graduated from the University of Porto's Faculty of Architecture (FAUP) in 2005 (having also attended the École National Supérieure d'Architecture Paris-Val de Seine 2002/03 under the Erasmus programme). He is currently working on his PhD thesis at FAUP.

Parallel to his academic work, Ivo is also a partner in the Ivo Poças Martins e Matilde Seabra Arquitectos firm. He is founder and co-editor of the fanzine *Friendly Fire* dedicated to architecture and urban culture.

From 2012 to 2015 Ivo was a member of the editorial board of *Jornal Arquitectos*. In 2016 he joined the team for the 4th edition of the Lisbon Architecture Triennale as a curatorial assistant.

See all biographies: www.trienaldelisboa.com

THE FORM OF FORM

Content

MICROCITIES | SOCKS-STUDIO **Mariabruna Fabrizi** **& Fosco Lucarelli** (FR)

Mariabruna Fabrizi (1982) and Fosco Lucarelli (1981) graduated with distinction from the University of Roma Tre, having previously studied in Munich and Madrid. They founded the studio Microcities in Paris, where they currently live. In 2006 the duo launched the online magazine Socks, whose format has been evolving throughout the years, gradually becoming a base for speculation on and discussion of the Microcities design projects. The site is organized into several main categories but seeks to continuously call those boundaries into question. Launched in 2006 as an immaterial repository, Socks has expanded its content and is currently configured as a visual atlas in expansion.

Exhibition Design

Johnston Marklee **& Associates** (US)

Johnston Marklee & Associates is a Los Angeles-based architectural firm, founded in 1998, with clients all over the world, including USA, Switzerland, Italy, Chile, Argentina and China. The principals Sharon Johnston and Mark Lee's approach to design covers a range of scales from urban master plans to buildings and temporary installations, having built up a substantial body of work in the residential, commercial and institutional environments. In 2012, Johnston Marklee & Associates won the international competition for the Menil Drawing Institute in Houston, Texas.

Exhibition Design

OFFICE KGDVS (BE)

OFFICE KGDVS was founded in 2002 by Kersten Geers and David van Severen. In more than ten years of practice the studio has gained international recognition for its direct and precise designs. In 2010 they won the Venice Biennale Silver Lion for most promising young architect. In 2012 2G#63 published a retrospective of their work in a monographic issue. Recently they were awarded a double Belgian Prize for Architecture. Office KGDVS is currently working on several design projects in Europe and further afield.

Exhibition Design

Nuno Brandão Costa (PT)

Nuno Brandão Costa (Porto 1970) graduated from Faculty of Architecture of University of Porto (FAUP) in 1994, where he has also taught Project 4 since 2001 and from where he received his PhD in 2013.

He did his internship with Herzog & de Meuron in Basel, Switzerland, in 1992 and 1993, and worked with José Fernando Gonçalves & Paulo Providência in Porto, from 1993 to 1998. In 2004, he won the Revelation and Merit Award from Jornal Expresso/SIC – 12 anos.

Nuno's work was included in the Portuguese representation in the 8th Venice Biennale International Exhibition in 2004, the São Paulo Architecture Biennale in 2005, *Portugal Now* at Cornell University, New York in 2007, *Tradition is innovation* in Tokyo in 2011, and the Milan Architecture Triennale in 2004 and 2014.

He was a nominee for the Mies van der Rohe Award in 2008 and he was awarded the Secil Prize 2008, the Vale da Gândara Prize 2010/2011 and was a nominee for the BSI - Swiss Architectural Award 2012.

He was a guest teacher at ETSA in Universidad de Navarra, in Taller Barozzi in the Escola Politècnica da Universidade de Girona and at the EHL Campus in Lausanne. He was coordinator and teacher in Advanced Studies in Architectural Design (EAPA) 2014/2015 in FAUP.

BUILDING SITE

Exhibition Design

SAMI– arquitectos (PT)

Inês Vieira da Silva and Miguel Vieira established SAMI–arquitectos in 2005. Since then their work has been internationally recognized with the following awards: X BIAU Award – Bienal Iberoamericana de Arquitectura y Urbanismo, Madrid (2016); winners of the European Award Architectural Heritage AADIPA, Barcelona (2015); IX BIAU Award – Bienal Ibero-Americana de Arquitectura y Urbanismo, Madrid (2014); finalists in the FAD Awards, Barcelona (2015, 2012, 2011); and nominated for the European Union Prize for Contemporary Architecture – Mies van der Rohe Award, Barcelona (2015, 2011, 2007).

In 2014, SAMI–arquitectos were part of the official Portuguese representation at the Venice Architecture Biennale, and at the 9th Bienal Internacional de Arquitetura in Sao Paulo (2011). They were selected for the Wallpaper* Architects Directory 2011, and recommended by Herzog & de Meuron for the Villa Ordos100 project in China (2007).

Inês Vieira da Silva and Miguel Vieira have been invited to participate in conferences, exhibitions, and to collaborate with architecture schools in Portugal and abroad.

Co-curator

Pedro Alonso (CL)

Pedro Ignacio Alonso holds a Masters in Architecture from the Catholic University of Chile (2000) and a PhD from the Architectural Association School of Architecture (2008). His 2014 Chile Pavilion titled *Monolith Controversies*, co-curated with Hugo Palmarola, was awarded a Silver Lion at the 14th Venice Architecture Biennale. Together they have curated exhibitions and presented their work at the Architectural Association in London, the Pratt Institute in New York, the Tel Aviv Museum of Art and the Sao Paulo Cultural Centre. They are the authors of the books *Panel* (Architectural Association, 2014) and *Monolith Controversies* (Hatje Cantz, 2014), which was awarded a DAM Architectural Book Award from the Deutsches Architekturmuseum and Frankfurt Book Fair (2014). Alonso is also author of *Deserta: Ecology and Industry in the Atacama Desert* (ARQ, 2012), and has published articles in AA Files, San Rocco and Manifest, and book chapters with Routledge (2013) and MIT Press (2014). He is an associate professor at the Catholic University of Chile in Santiago, a visiting tutor at the Architectural Association in London and a Princeton-Mellon Fellow 2015-2016 at Princeton University.

Co-curator

Jorge Carvalho (PT)

Jorge Carvalho (1964) is an architect and lecturer, and has been an active participant in the debate on architecture as a discipline.

He graduated in from the Faculty of Architecture in Porto in 1990. From 1988 to 1990 he worked in London with David Chipperfield, after which he collaborated with Siza Vieira as project coordinator for the Chiado reconstruction in Lisbon, as well as for other building projects in that area.

In 1991 Jorge founded aNC architects with Teresa Novais. Their work has been widely recognized internationally, winning the IX Award of the IX Bienal Ibero Americana de Arquitetura e Urbanismo 2014 as well as a nomination for the Mies van der Rohe Award in 2011. aNC was the local studio during the construction of Casa da Música, designed by Rem Koolhaas/OMA.

Jorge Carvalho lectures at the Faculty of Architecture and Arts at Lusíada University in Porto, and at dARQ in Coimbra.

Co-curator

Hugo Palmarola (CL)

Hugo Palmarola is a designer who graduated from the Catholic University of Chile in 2004. He also holds an MA in Theory and History of Design from the National Autonomous University of Mexico (2010). His 2014 Chile Pavilion titled *Monolith Controversies*, co-curated with Pedro Alonso, was awarded a Silver Lion at the 14th Venice Architecture Biennale. Together they have curated exhibitions and presented their work at work at the Architectural Association in London, the Pratt Institute in New York, the Tel Aviv Museum of Art and the Sao Paulo Cultural Centre. They are the authors of the books *Panel* (Architectural Association, 2014) and *Monolith Controversies* (Hatje Cantz, 2014), which was awarded a DAM Architectural Book Award from the Deutsches Architekturmuseum and Frankfurt Book Fair (2014). Palmarola has published book chapters with Museo Reina Sofía (2006), Routledge (2013), MIT Press (2014), and Sternberg Press (2015). He has been an International Scholar at The Society for the History of Technology (2008) and a member of the Advisory Committee for Exhibitions at Los Angeles County Museum of Art in USA (2013). He currently lectures at the Catholic University of Chile's School of Design.

BUILDING SITE

Co-curator

Giovanna Borasi (CCA)^(IT)

Giovanna Borasi is an architect, editor and writer and Chief Curator at the Canadian Centre for Architecture. She was Deputy Editor in Chief for *Abitare* (2011-2013) and editor and writer for *Lotus International* (1998-2005). She has curated several exhibitions and edited publications focusing on how environmental and social issues influence today's urbanism and architecture, including: *Environment: Approaches for Tomorrow* (2006), *Some Ideas on Living in London and Tokyo* (2008), *Journeys: How Travelling Fruit, Ideas and Buildings Rearrange our Environment* (2010). She co-curated the exhibitions *Other Space Odysseys* (2010), *1973: Sorry, Out of Gas* (2007), *Actions: What You Can Do With the City* (2008 – 2009) and *Imperfect Health: The Medicalization of Architecture* (2011). More recently, she curated the exhibition *The Other Architect* (2015) and was editor of the accompanying catalogue.

Special Guest

Michael Wesely ^(DE)

Michael Wesely is a German photographer who captures photos using extremely long camera exposures and a special technique he has been developing and refining since the 1990s. He takes mainly pictures of cities, buildings and landscapes that require periods of exposure of up to 26 months, as in the case of his work on the Potsdamer Platz redevelopment in Berlin. Wesely was invited by MoMa to document its own construction and renovation project in 2001. His book *Michael Wesely: Open Shutter* was published as an outcome of that experience, edited by Sarah Hermanson Meiser. He has had numerous solo exhibitions around the world, such as *The Epic View* at Mies Van der Rohe Haus in Berlin (2014), *An other pencil of nature* at NordLB art gallery in Hannover (2013), *mortos*

Invited Studio

David Chipperfield Architects ^(UK)

Since its foundation in 1985, David Chipperfield Architects has developed a diverse international body of work including cultural, residential, commercial, leisure and civic projects as well as masterplanning exercises. Within the portfolio of museums and galleries, projects range from private collections such as the Museo Jumex in Mexico City to public institutions such as the revitalised Neues Museum in Berlin. Practices in London, Berlin, Milan and Shanghai, contribute to a wide range of projects and typologies. David Chipperfield Architects has won more than 100 international awards and citations for design excellence, including the European Union Prize for Contemporary Architecture – Mies van der Rohe Award, and the Deutscher Architekturpreis in 2011 (both for the Neues Museum).

Invited Studio

Usina ^(BR)

Founded in 1990, Usina intervenes in processes involving planning, design and construction by the workers themselves, mobilizing public funds in the context of a struggle for urban and agrarian reform in Brazil. Usina has already been involved in the conception and execution of more than 5 thousand housing units in differing contexts throughout the country. The practice works on the development of urban programmes and plans and assists in the training and organization of work cooperatives, creating materials and workshops for education of the people. By intervening directly in the spatial production, Usina helps to develop social and productive experiences that are anti-hegemonic and reveal possible paths for confronting the capitalist logic.

BUILDING SITE

Invited Studio

SKREI (PT)

Founded in 2009 in central Porto by Pedro Jervell and Francisco Adão da Fonseca, SKREI strives to unite in a single activity the main areas associated with building – architecture, engineering, construction, research applied to construction materials and artistic production. SKREI has worked closely with the local wine industry, in projects such as those for the Ramos Pinto laboratory, Muxagat (materials for vinification of Muxagat wines), the renovation of the Vale Meão wineries and masterplan and the winery and oeno-tourist centre at Herdade do Esporão. SKREI is also actively involved in the regeneration of Porto's central downtown area and on the River Douro waterfront. It also takes part in research projects with the Minho and Porto universities.

Invited Studio

OMA (NL)

OMA is a leading international partnership offering architecture, urbanism and cultural analysis services. OMA's buildings and master plans around the world insist on intelligent forms while inventing new possibilities for content and everyday use. OMA is led by ten partners – Rem Koolhaas, Ellen van Loon, Reinier de Graaf, Shohei Shigematsu, Iyad Alsaka, David Gianotten, Chris van Duijn, Ippolito Pestellini Laparelli, Jason Long and Michael Kokora – and maintains offices in Rotterdam, New York, Beijing, Hong Kong and Doha. OMA-designed buildings currently under construction include the Fondazione Prada in Milan, the Taipei Performing Arts Centre, the Qatar Foundation headquarters, the Qatar National Library, the Musée National des Beaux-Arts in Quebec and a new building for the Garage Centre for Contemporary Culture in Moscow.

THE WORLD IN OUR EYES

Curator

FIG Projects (CA)

Founded in 2003 by architects Fabrizio Gallanti and Francisca Insulza, FIG Projects is a platform for promoting interdisciplinary initiatives and to exploring the boundaries between architecture, urban research and the visual arts. Wide-ranging in nature, their projects include architectural explorations, urban studies and curatorial projects. Their work has been exhibited in venues worldwide, including the Museo de Arte Contemporaneo, Santiago de Chile; exo, Sao Paulo; film + arch, Graz; Architecture and Urbanism Biennale, Shenzhen Hong Kong; Canadian Centre for Architecture, Montreal; the Centro Cultural in São Paulo; and the Venice Architecture Biennale. Their projects have also been published in books such as *USE, Uncertain States of Europe* and international magazines *Domus*, *A+U*, *Abitare*, amongst others. Fabrizio and Francisca both hold doctoral degrees, in Architecture and History of Architecture respectively, and regularly collaborate in international projects for exhibitions, publications and research in the field of architecture and its many forms of expression.

www.fig-projects.com

Exhibition Design

Barão-Hutter (CH)

Based in Zurich, the Barão-Hutter studio was founded by Ivo Barão (b. 1986), who studied at the Faculty of Architecture in Porto, and Peter Hutter (b. 1984), who graduated from the Swiss Federal Institute of Technology in Zurich. Having gathered professional experience with Peter Zumthor, they founded Barão-Hutter in 2010. With a working process that includes multidisciplinary teams of artisans and artists, the firm's short history already includes several stand-out projects. In 2012, they won the competition to convert a 19th-century military complex into the Oser Theater in the Swiss city of Aarau. Together with the artist Rui Anahory, the duo also designed the Kiosk Mythenquai in Zurich. Amongst other types of projects they are working on the master plan for the museum quartier in the city of St. Gallen in Switzerland.

www.barao-hutter.com

SATELLITES

Participant

Eduardo Souto de Moura (PT)

A Triangular History

Eduardo Souto de Moura was born in 1952 in Porto, Portugal. He studied architecture at the School of Fine Arts in Porto, and taught there from 1981 to 1991. He later took up work as a professor at the University of Porto's Faculty of Architecture. Eduardo Souto de Moura founded his own practice in 1980. He has been a visiting professor at the architectural schools of Paris-Belleville, Harvard, Dublin, ETH Zurich, Lausanne and Mantova. He has participated in numerous seminars and given many lectures, both in Portugal and abroad. His work has appeared in various publications and exhibitions. In 2011 he received the Pritzker Prize, and in 2013 the Wolf Prize.

Participant

Plan Común (CL)

The Limits of Landscape

Plan Común is an architectural office founded in 2012 after 6 years of disciplinary debate, professional collaboration and editorial production with OnArchitecture.

Plan Común proposes formal strategies for maximizing and consolidating public or shared space, which is considered a key aspect of architecture, regardless of scale or programme.

www.plancomun.com

Participant

Manon Mollard (FR)

The Limits of Landscape

Manon Mollard is a young architectural designer and writer. Born in France and raised between Europe and Latin America, she has worked in Colombia and is currently based in London, where she is assistant editor at the Architectural Review.

Concept

Storefront for Art and Architecture (US)

Letters to the Mayor

Founded in 1982, Storefront for Art and Architecture is a non-profit organization committed to the advancement of innovative positions in architecture, art and design. Their programme of exhibitions, artists' talks, film screenings, conferences and publications is intended to generate dialogue and collaboration across geographic, ideological and disciplinary boundaries. As a public forum for emerging voices, Storefront explores vital issues in art and architecture with the intent of increasing awareness of and interest in contemporary design.

Storefront was founded in 1982 by Kyong Park as an experimental forum and exhibition space for activating and engaging emerging voices and promoting public discourse around issues effecting, influencing and challenging the built environment.

www.storefrontnews.org

SATELLITES

Curator

Godofredo Pereira ^(PT)

Object — Project

Godofredo Pereira holds an M.Arch degree from the Bartlett School of Architecture and a PhD from Goldsmiths University. His research project, *The Underground Frontier*, focuses on territorial politics, geo-architecture and fetishism. He is part of the Forensic Architecture research team, where he coordinates the Atacama Desert Project. He is a collaborator of HKW in Berlin, where he co-organized the seminars Geopolitics and Axiomatic Earth for the Anthropocene Curriculum & Campus (2014 – 2016). He coordinates History and Theory course unit for the M.Arch course in Urban Design at Bartlett School of Architecture, and teaches the Ecologies of Existence course at the Royal College of Art. In 2012, Godofredo Pereira was the editor of the book *Objectos Selvagens*.

Curator

Artéria ^(PT)

Power of Experiment

Artéria is an independent architectural practice based in Lisbon. It was founded in 2011 by Ana Jara and Lucinda Correia with the aim of conceiving, developing and promoting urban regeneration projects. Artéria is strongly committed to action research projects, within an interdisciplinary framework, aimed at creating unique proposals in cooperation with public and private entities. It highlights the importance of education for space and architecture, by building site-specific educational projects to develop spatial reading and abstraction capabilities. Artéria explores the social, cultural and artistic dimensions of architecture, through direct involvement of the communities, the development of own intervention programmes in the territory, and the establishment of partnerships with local associations and public bodies. In 2013 it was nominated for the Best Architecture Practice Prize by Construir Magazine. In 2014 it was included in Portuguese representation at the 14th Venice Architecture Biennale. In 2015 it was a nominee for the International Architecture Prize awarded by the Iakov Chernikhov Foundation.

www.arteria.pt

Curator

Léa-Catherine Szacka ^(CA)

2016- Ennials

Léa-Catherine Szacka is Assistant Professor at the Institute of Form, Theory and History, Oslo School of Architecture and Design (AHO). Her writing and research focuses on the presentation and representation of architecture in exhibitions and the post-1968 institutionalization of architecture, as well as the postmodern debate in Europe and America. In 2014 she presented *Effimero: Or the Postmodern Italian Condition*, a contribution to the *Monditalia* exhibition at the 14th International Architecture Exhibition at the Venice Biennale.

Curator

Rute Figueiredo ^(PT)

2016- Ennials

Rute Figueiredo is an architect and architectural historian. Her publications and research work have focused on architecture as a discipline, the Venice Architecture Biennale, and analysis of the critical discourse published in periodical press. She is currently pursuing a PhD in History and Theory of Architecture at the gta/D-ARCH/ETH Zurich. Her doctoral thesis analyses how architecture's disciplinary framework have been conceptualized and discussed within the context of the Venice Architecture Biennale.

Lisbon Triennale Team**Chief Curators**

André Tavares
Diogo Seixas Lopes

Assistant Curator

Ivo Poças Martins

—

Board

José Mateus, Chairman
Nuno Sampaio,
Vice-chairman

Members

José Manuel dos Santos
Maria Dalila Rodrigues
Pedro Araújo e Sá

Deputy Director

Manuel Henriques

Management Assistant

Helena Soares

Administrative Assistant

Olinda Silva

Production

Ilsabel Antunes (coord.)
André Gonçalves
Carolina Vicente
Inês Marques
Liliana Lino
Sofia Baptista
André Marques (assist.)
Inês Ferreira (assist.)
Leonor Guerra (assist.)
Rita Mota (assist.)

Communication

Sara Battesti (coord.)
Cláudia Duarte
Claudia Di Lecce
Inês Revés
Raquel Guerreiro
Dinis Coruche (assist.)
Filipa Contente (assist.)
Teresa Conceição (assist.)

Activities**and Volunteer Programme**

Susana Gaudêncio
Beatriz Caetano Bento
Inês Martins

**Fundraising and
Partnerships**

Joana Salvado
Joanna Hecker

Publications Coordinator

Ana Resende

**Graphic Design and Art
Direction**

R2

Website

Sara Orsi

Associates

Casa da Arquitectura
Babel
EDP Foundation
**Portuguese Architects
Guild**
José Mateus, Architect

Fundraising**and Partnerships**

Joana Salvado
Joanna Hecker

Publications Coordinator

Ana Resende

**Graphic Design
and Art Direction**

R2

Website

R2

Sara Orsi

Associates

Casa da Arquitectura
Babel
EDP Foundation
Portuguese Architects Guild
José Mateus, Archite

Parceiros Estratégicos / Strategic Partners



Estrutura Financiada por / Programme Financed by



Trienal de Lisboa Millennium bcp Prémio/Awards



Co-Produtores / Co- Producers



Marca Associada / Associated Brand



Hotel Oficial / Official Hotel



Fundos Internacionais / International Funds



Parceiros Institucionais / International Partners



Parceiros Media / Media Partners



A Forma da Forma / The Form of Form

Patrocinador Oficial / Official Sponsor



Parceiro / Partner



Patrocinadores / Sponsors



Iluminação / Lighting



Marcas Associadas / Associated Brands



Obra / Building Site

Patrocinador / Sponsor



Mecenas Bronze / Bronze Patronage



Talk, Talk, Talk

Patrocinador / Sponsor

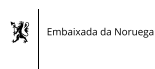


Concurso Universidades / Universities Competition



Satélites / Satélites

Parceiros / Partners



A Forma da Forma / The Form of Form – Apoios / Support: Gpic, OBO Bettermann | Obra / Building Site

– Apoios / Support: Dirac, PUC-Chile | O Mundo nos Nossos Olhos / The World in Our Eyes – Apoios / Support: Espaço Espelho d'Água, CIN | Concurso Universidades / Universities Competition – Apoios / Support: APS – Administração do Porto de Sines e Algarve SA; Central Termoelectrica de Sines-EDP | Talk Talk Talk – Apoios / Support: FCT - Fundação para a Ciência e Tecnologia | 2016-Ennials – Hotel: Memmo Príncipe Real | Transporte Oficial / Official Carrier: Transportes de Lisboa | Apoios / Support: Abreu Advogados; Archello; FabLab Lisboa; The Design Directory | Associados / Associates: Casa da Arquitectura; Fundação EDP; Ordem dos Arquitectos; Babel; José Mateus Arquitecto.

Com o Alto Patrocínio de Sua Excelência o Presidente da República Prof. Dr. Marcelo Rebelo de Sousa
High Patronage of His Excellency the President of the Portuguese Republic Prof. Dr. Marcelo Rebelo de Sousa